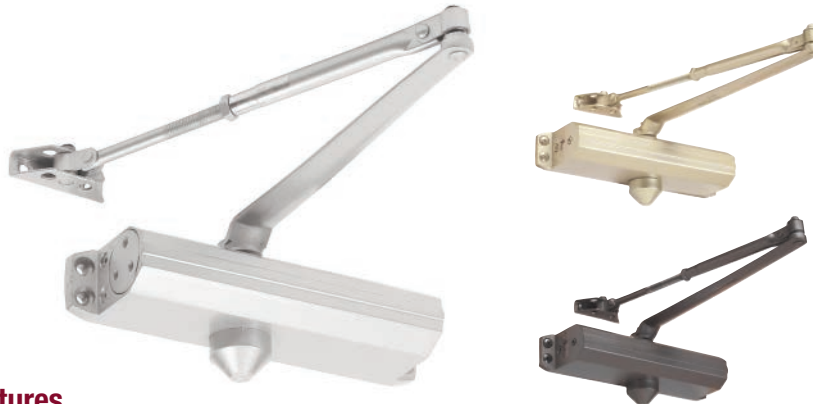




600 SERIES

Heavy-Duty Commercial Grade 1 Surface Applied Closers



Standard Features

- **Performance** Complies with ANSI A156.4, Grade 1, 2 million cycles, UL/ULC listed up to 3 hours fire rated
- **Chassis/Closer** Cast aluminum
- **Handing** Non-handed
- **Mounting** **TRI-PACK** — regular, top jamb and parallel arm applications.
- **Main Arm** Forged steel, accommodates reveals up to 3 1/4", adjustable extension arm
- **Spring Power** Adjustable 1 - 4 and 3 - 6 sizes
- **Backcheck** Adjustable, hydraulic - providing cushioning and preventing uncontrolled door openings.
- **Valves** Adjustable, independent, non-critical (sweep and latch), consistent closing speeds
- **Fasteners** Metal screws included for hollow metal and aluminum mounting applications. Wood screws included for wood door mounting applications. Thru-bolts optional.
- **Door Range** Up to 180 degrees
- **Door Preparation** 9-1/16" horizontal and 3/4" vertical mounting hole locations (retrofits traditional closer)
- **Warranty** 25 year limited

Optional Features

- **Covers** High impact plastic and plated kit: cover, arm & bracket.
- **Hold Open Arm** Forged steel with hold open adjustable from 80 to 135 degrees
- **Sex Nuts** For 1-3/8" or 1-3/4" thick doors

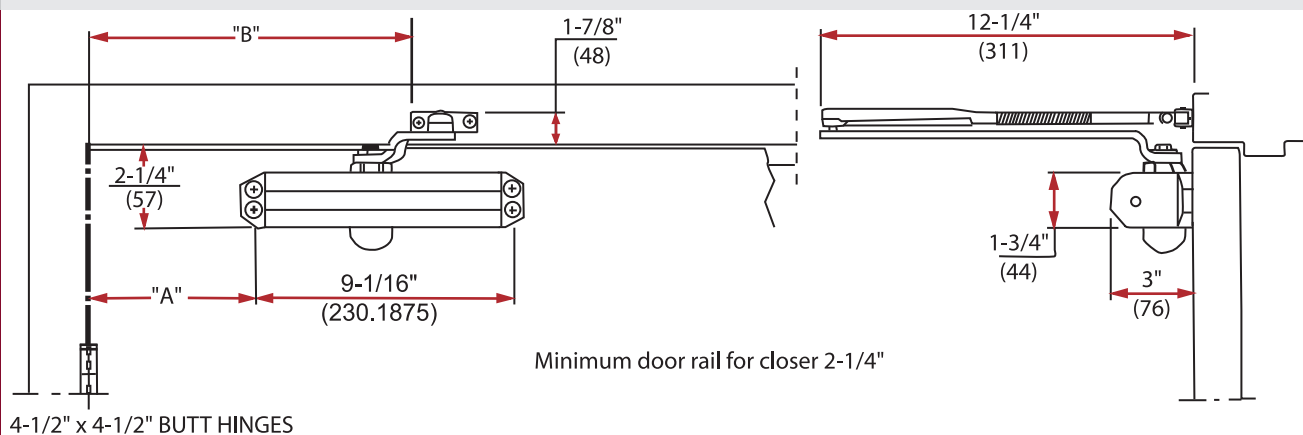
Other View:





600 Series Application Drawings:

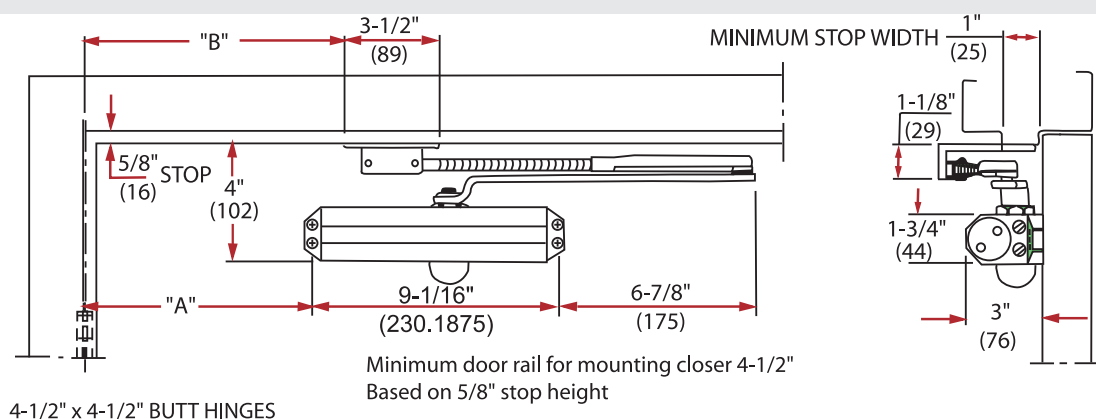
Regular Arm Installation



TEMPLATE REFERENCE	DIM "A"	DIM "B"	APPROX. MAXIMUM OPENING	APPROX. BACKCHECK RANGE
TO 120°	5-1/8" (130)	11-5/8" (295)	122°	67°-122°
OVER 120°	3-11/16" (94)	9-5/8" (244)	180°	87°-180°

Note: Dimensions shown are inches / millimeters

Parallel Arm Installation



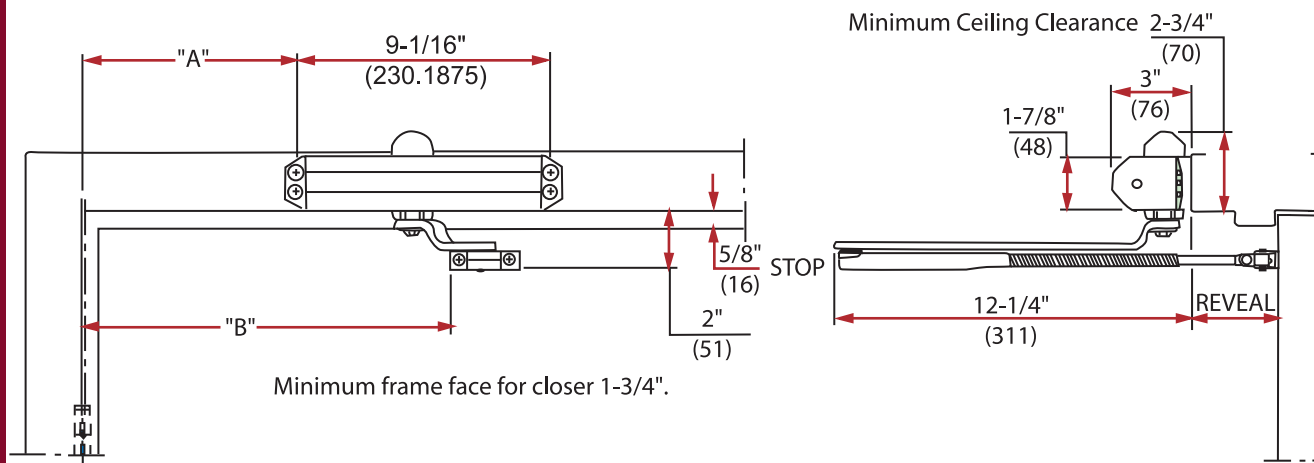
TEMPLATE REFERENCE	DIM "A"	DIM "B"	APPROX. MAXIMUM OPENING	APPROX. BACKCHECK RANGE	MINIMUM DOOR WIDTH
TO 120°	7-11/16" (195)	8-13/16" (224)	124°	82°-124°	24" (635)
OVER 120°	6-5/16" (160)	7-1/8" (181)	180°	95°-180°	24" (610)

Note: Dimensions shown are inches / millimeters



600 Series Application Drawings:

Top Jamb Installation



TEMPLATE REFERENCE	DIM "A"	DIM "B"	APPROX. MAXIMUM OPENING	APPROX. BACKCHECK RANGE
TO 120°	5-3/8" (137)	11-1/2" (292)	125°	77°-125°
OVER 120°	3-3/16" (81)	8-1/2" (216)	180°*	93°-180°

* 2-3/4 maximum Reveal for 180° opening
Note: Dimensions shown are inches / millimeters

600 Series Accessories:



Backplate

DC100131 (AL)

DC100132 (Duro)

DC100133 (Gold)

For top jamb mount where overhead ceiling clearance is less than 2-3/4" or for regular mount to clear a mortised stop/holder.



Drop Plate

DC100100 (AL)

DC100129 (Duro)

DC100130 (Gold)

For top jamb mount when overhead ceiling clearance is less than 1-7/8" or to provide clearance for overhead holder. Also permits parallel arm installation on doors with a minimum top rail of 2-1/2".



Parallel Arm Bracket, (PAB)

DC100117 (AL)

DC100192 (Duro)

DC100216 (Gold)

Used when mounting as parallel arm with regular main arm.



Sex Nuts:

SNB1

DC100222 (AL)

DC100095 (Duro)

DC100096 (Gold)

SNB1 — Sex nuts with machine screws for 1-3/4" (44 mm) door.

SNB2

DC100089 (AL)

DC100203 (Duro)

SNB2 — Sex nuts with machine screws for 1-3/8" (35 mm) door.



Friction Hold Open "L" Bracket, (FHO)

DC100225 (AL)

Used when mounting parallel arm or friction hold open (FHO).



NOTE: AL=Aluminum, Duro=Duronodic



600 Series Arm & Cover Options:

Regular Arm (Standard)

DC100118 (AL)

DC100119 (Duro)

Complete arm assembly with forged steel main arm, full articulating adjusting arm and 10mm threaded rod and shoe to accommodate 0" to 3-1/4" inch reveals.



Top Jamb Arm—Deep Reveals, (TJDR)

DC100101 (AL)

DC100134 (Duro)

Complete arm assembly with forged steel main arm, full articulating adjusting arm and 10mm threaded rod and shoe to accommodate 3-1/4" to 8" reveals.



Friction Hold Open, (FHO)

DC100097 (AL)

DC100098 (Duro)

Complete hold open arm assembly with forged steel main arm, flatform articulating adjusting arm and rod and shoe. Provides positive single point hold open adjustable from approximately 80 degrees to 135 degrees.

*PA bracket optional



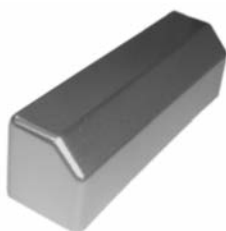
Full Cover, (COV)

DC100102 (AL)

DC100103 (Duro)

DC100104 (Gold)

High impact full plastic cover, non-handed.



Arm & Cover Kit

DC100165 (US3)

DC100167 (US26)

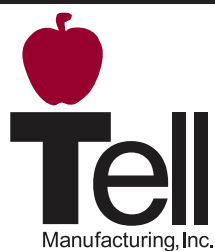
Optional Plated Kit includes non-handed full metal cover, regular arm, parallel arm bracket and all fasteners in matching plated finish.



NOTE: AL=Aluminum, Duro=Duronodic, US3=Bright Brass, US26=Bright Chrome

TELL MANUFACTURING, INC — Page 19 — 2014

CORPORATE OFFICE: 18 Richard Drive, Lititz, PA 17543 TOLL FREE: 800-433-4047 PHONE: 717-625-2990 FAX: 717-625-7095
OTHER LOCATIONS: BIRMINGHAM, ALABAMA MIRA LOMA, CALIFORNIA ELKHART, INDIANA HOUSTON & DALLAS, TEXAS
WEBSITE: www.tellmfg.com



600 Series Cross Reference Chart:

TELL	CAL-ROYAL	DORMA	DOR-O-MATIC	INTERNATIONAL	LCN	NORTON	PARKER	SENTINEL	YALE	SARGENT
642BC/	N/A	7302/	N/A	N/A	1074/1075	1602BC*/	952BC/	S52BC/	52BC*/	1132*/
646BC		7305				1606BC*	955BC	S56BC	56BC*	1135*
640BC	900-P	7436	SC60	9001	N/A	1601*	900BC	S50BC	51*	1130*
										1430
641BC	900-PBF	7414	SC61	9003	1071	1601BF*	BF900BC	S51BC	51BF*	1131*
										1431*

NOTE: This chart has been prepared by comparing functions of door closers. Since no products are exactly alike, the data on this chart represents our judgement of which products are most similar. Because information has been obtained from trade sources, it is not guaranteed nor represented that any specific product exactly equals any other product.

* RETROFIT INSTALLATION HOLE FOR HOLE

600 Series Door Sizing Charts:

Regular/ Top Jamb Installation	DOOR WIDTH					
	CLOSER		2'-0" min.	2'-6" max.	3'-0" max.	3'-6" max. 4'-0" max.
	640	Interior	N/A	N/A	✓	✓
		Exterior	N/A	N/A	✓	⊗
	641	Interior	✓	✓	⊗	N/A
		Exterior	✓	✓	⊗	N/A
	643 to 646	Interior	N/A	N/A	643	644 645
		Exterior	N/A	643	644	645 646
Parallel Arm Installation	DOOR WIDTH					
	CLOSER		2'-6" max.	3'-0" max.	3'-6" max.	4'-0" max.
	640	Interior	✓	✓	✓	✓
		Exterior	✓	⊗	⊗	N/A
	641	Interior	✓	⊗	N/A	N/A
		Exterior	✓	N/A	N/A	N/A
	643 to 646	Interior	643	644	645	646
		Exterior	644	645	646	N/A

✓ = Recommended
 N/A = Not applicable or recommended
 ⊗ = Opening force 5 lbs. on interior and 8.5 lbs. on exterior doors



How to Order 600 Series:

